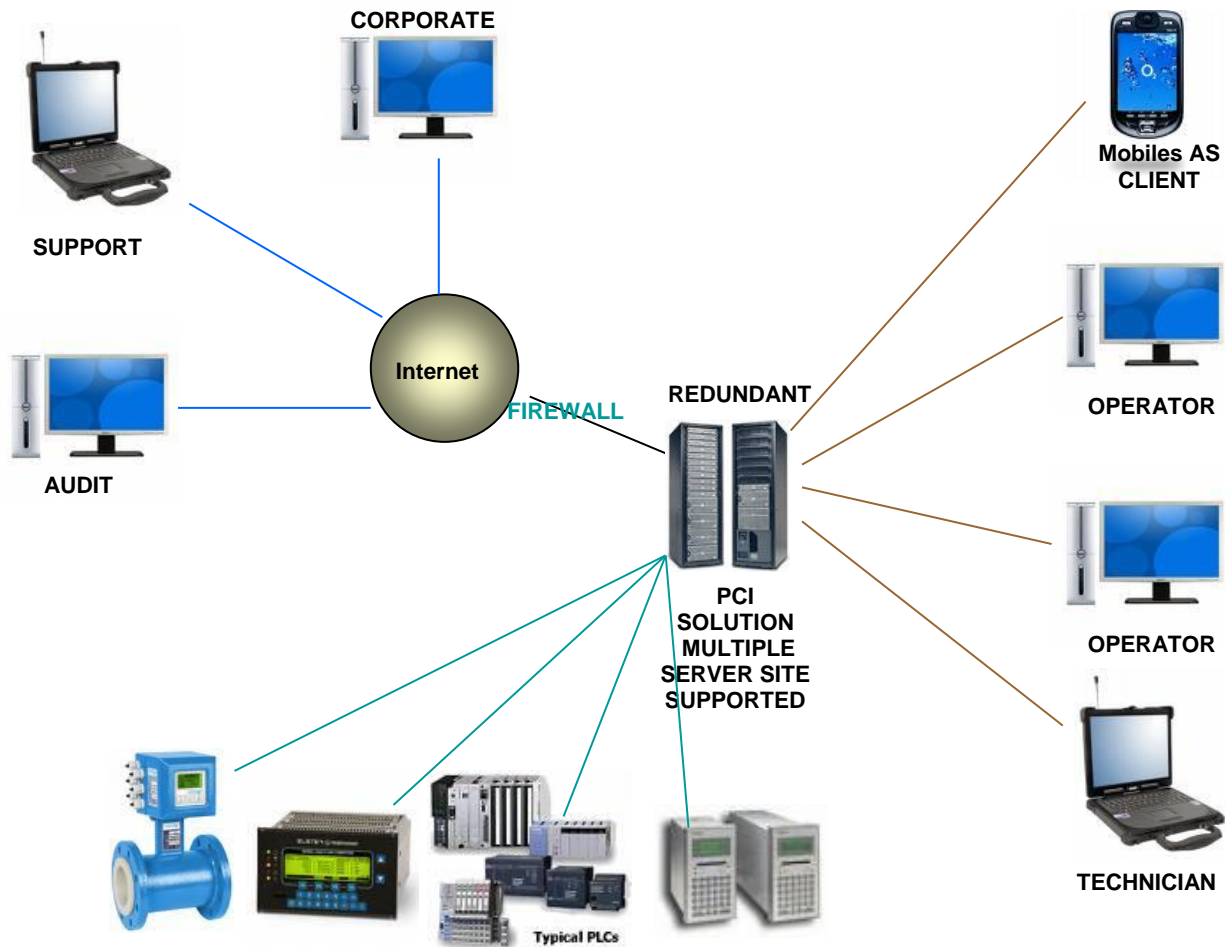


**BIOFUEL PLANTS & INDUSTRY**

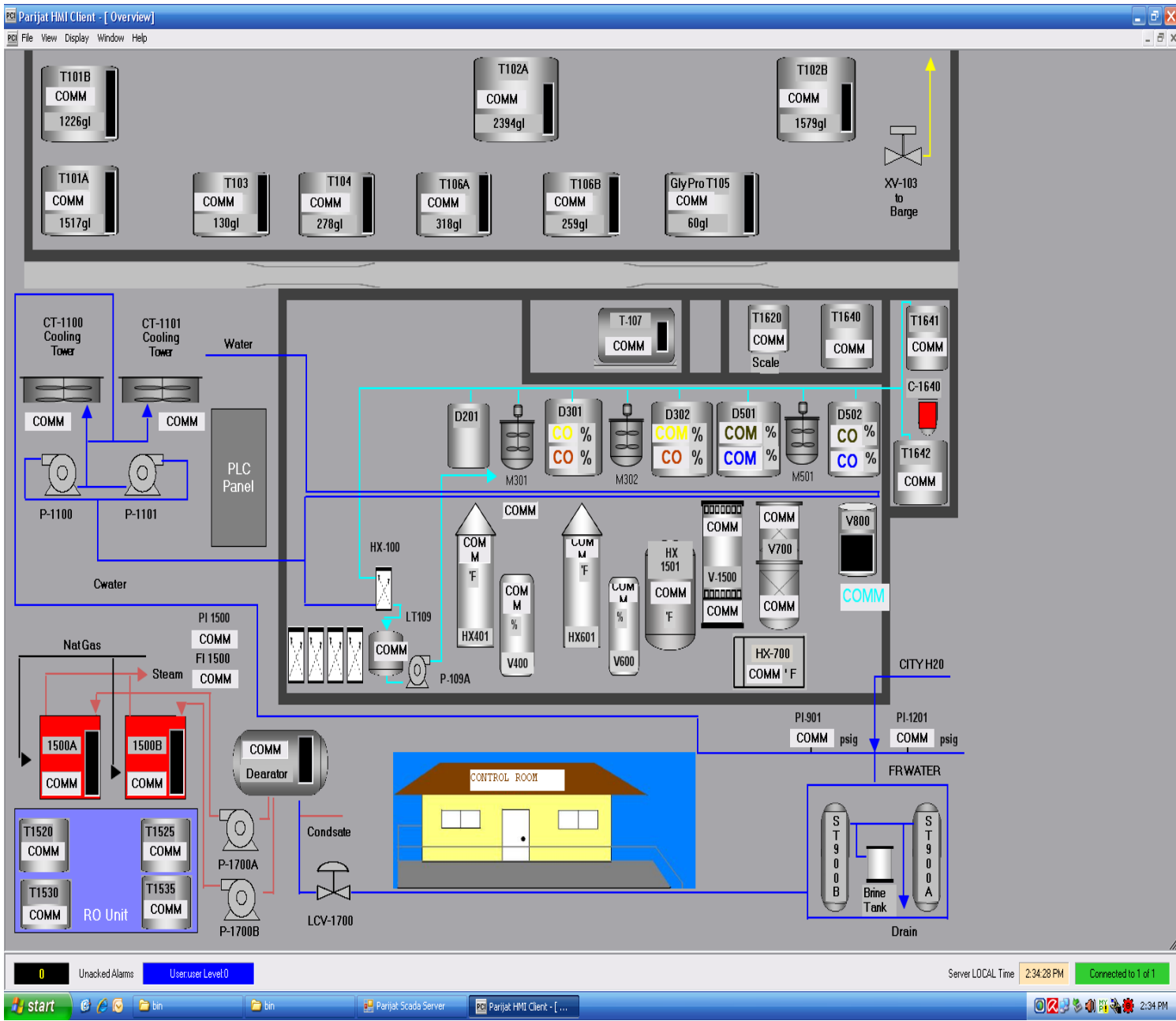
**WEB ENABLED / DESKTOP DATA ACQUISITION AND CONTROL**

- PCI HMI is a **Web enabled** as well as **Stand Alone desktop** data acquisition and control system solution which allows secure real time access to remote systems using **Internet / Intranet** communications or any other IP media.
- Inexpensive technology to create leading edge solutions.
  - a) Rapid Deployment    b) Real-time data Acquisition    c) Graphic Rich Interface
  - d) Secure    e) Reports    f) Proven dependable Technology.
- PCI Solution focuses on Data Acquisition from smart instruments, Smart RTUs, PLCs, several types & quantity of Meters, VFDs, Analyzers, Power monitors, Boilers, etc.
- Solution allows **Real-Time** interface between remote Instruments / RTUs / PLCs and Internet or local network. Smart Industrial devices connected to servers using **MODBUS / AB / SIEMENS / GE FANUC** or any other **PROTOCOL** via **Ethernet or Serial** connection.



- **POSSIBILITIES:** Real Time data, Reporting, Trending, Historian, Work Orders, Hardware Health Indicator, Integrate Drawings (P&ID), Graphical Interface, Overview Screen, Alarm summary / log, etc.

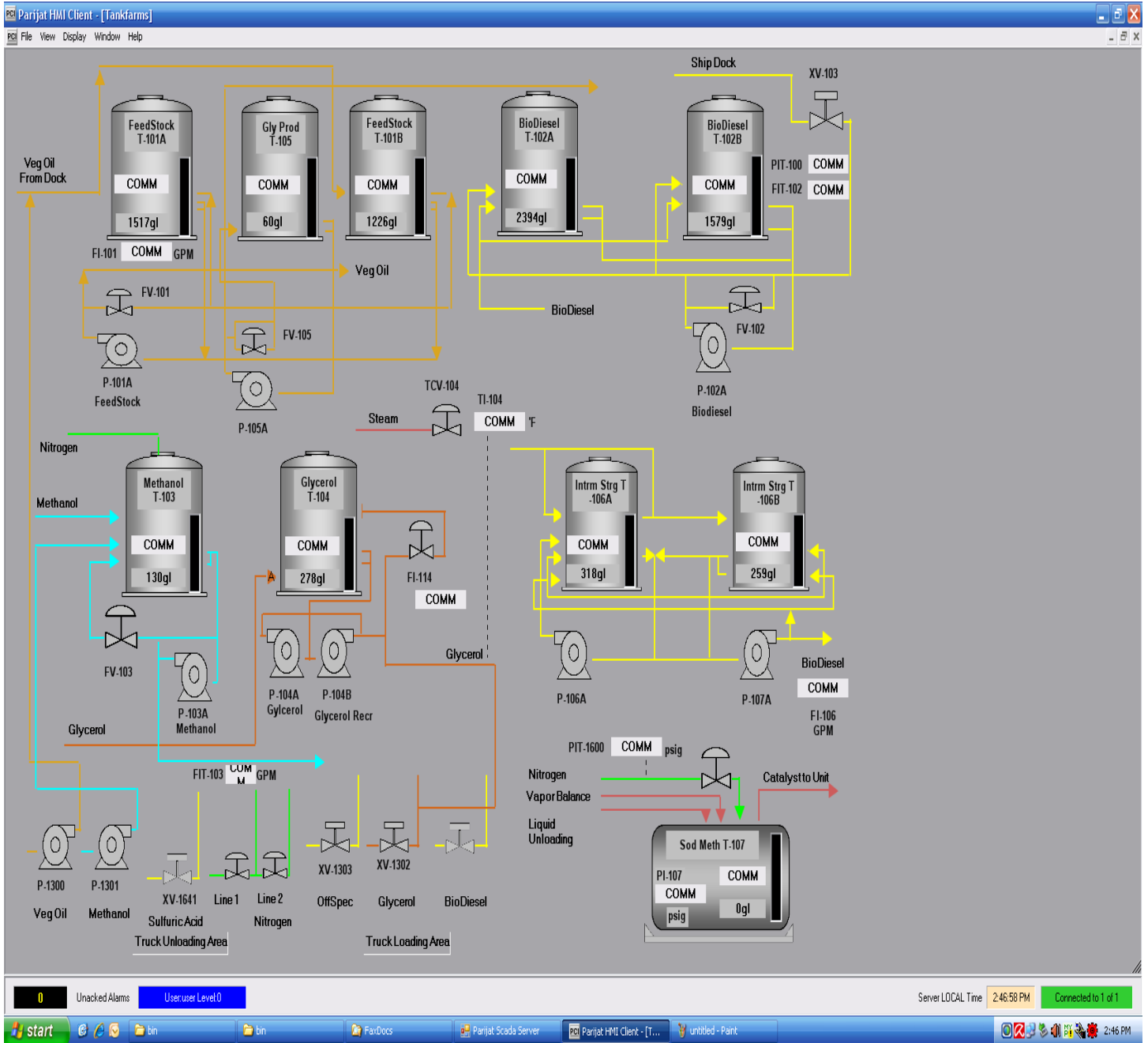
## OVERVIEW



- **Object-based** system on both HMI & PLC.
- **Simulation mode and Override mode.**
- Immense **diagnostics** for process, control, electrical, and operational ends.
- Full **Audit Trail** is available.

# PARIJAT

CONTROLWARE INC  
**TANKFARMS**



- **Redundancy and Clustering** support both in HMI and the PLC.
- **Multiple** feedstock types supported. Continuous or batch operations.
- Multiple thin & thick clients supported (Quantity limited only by network topology & throughput).
- Production **1 million gallons** of biofuels per year, up to **250 million gallons** at the site.